

2. The diagram of free energy changes in glycolysis:

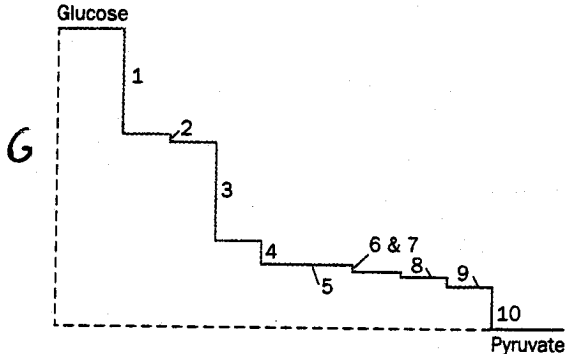


Figure 14-21 Diagram of free energy changes in glycolysis.

- Which three reactions are irreversible? What does this mean?
- The other seven reactions are near equilibrium. Explain how this diagram reflects this.

7. How does the nonpolar nature of the active site in hexokinase promote phosphoryl transfer from ATP?

*the nonpolar - how it affects the polar*