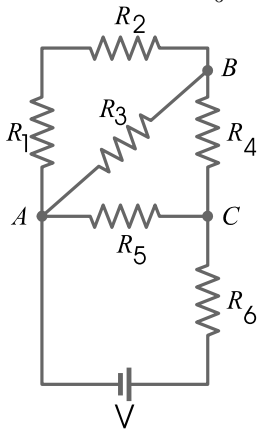


Due date: Tue 09 Feb 2010 11:45:00 AM EST

**Network Resistors**

Consider the figure below. All resistors have the same resistance of  $2.30\text{ k}\Omega$ . Assume  $V = 9\text{ V}$ . Calculate the current through resistor  $R_6$ .



Tries 0/10

Calculate the potential difference between points A and B.

Tries 0/10