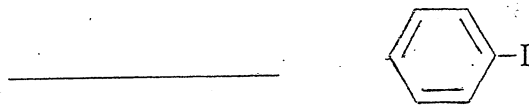
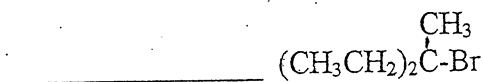
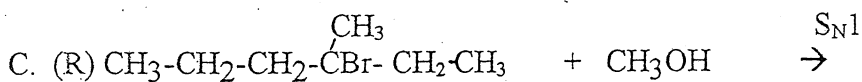
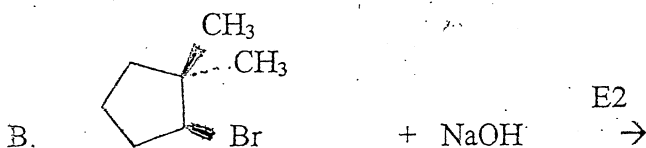
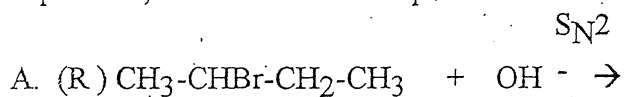


Match the structures below with the best description of the type of alkyl halide

- A. Primary
- B. Secondary
- C. Tertiary
- D. Vicinal
- E. Geminal
- F. Aryl



Provide **structures** of products for the following reactions. Include 3-dimensional stereochemistry and absolute configuration where appropriate. If more than one product is possible, circle that which is predominant.



Name the following alkyl halides.

