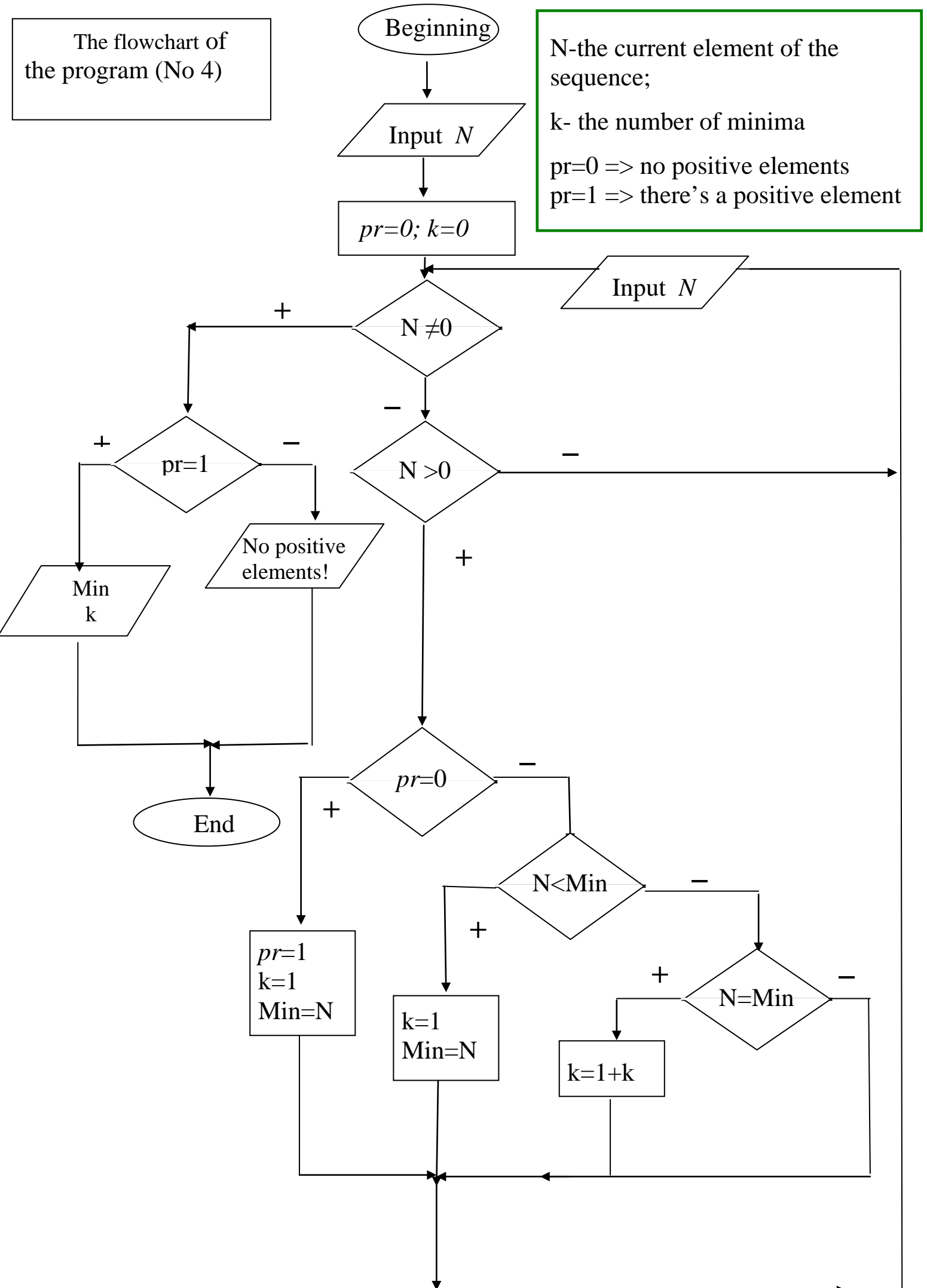


The flowchart of the program (No 4)

N-the current element of the sequence;
 k- the number of minima
 pr=0 => no positive elements
 pr=1 => there's a positive element



(No 4) MATLAB code

```
N=input('Enter an interger or 0 to end:');
k=0;
pr=0;
while N~=0
    if N>0
        if pr==0
            pr=1;
            min=N;
            k=1;
        elseif N<min
            min=N;
            k=1;
        elseif N==min
            k=k+1;
        end
    end
    N=input('Enter an interger or 0 to end:');
end

if pr==1
    disp('minimal element of the sequence')
    min=min
    disp('number of minimal elements')
    k=k
else
    disp('there is no positive elements !')
end
replyContinue=input('Do you want to continue?(y/n)','S');
```