

May 31, 2011

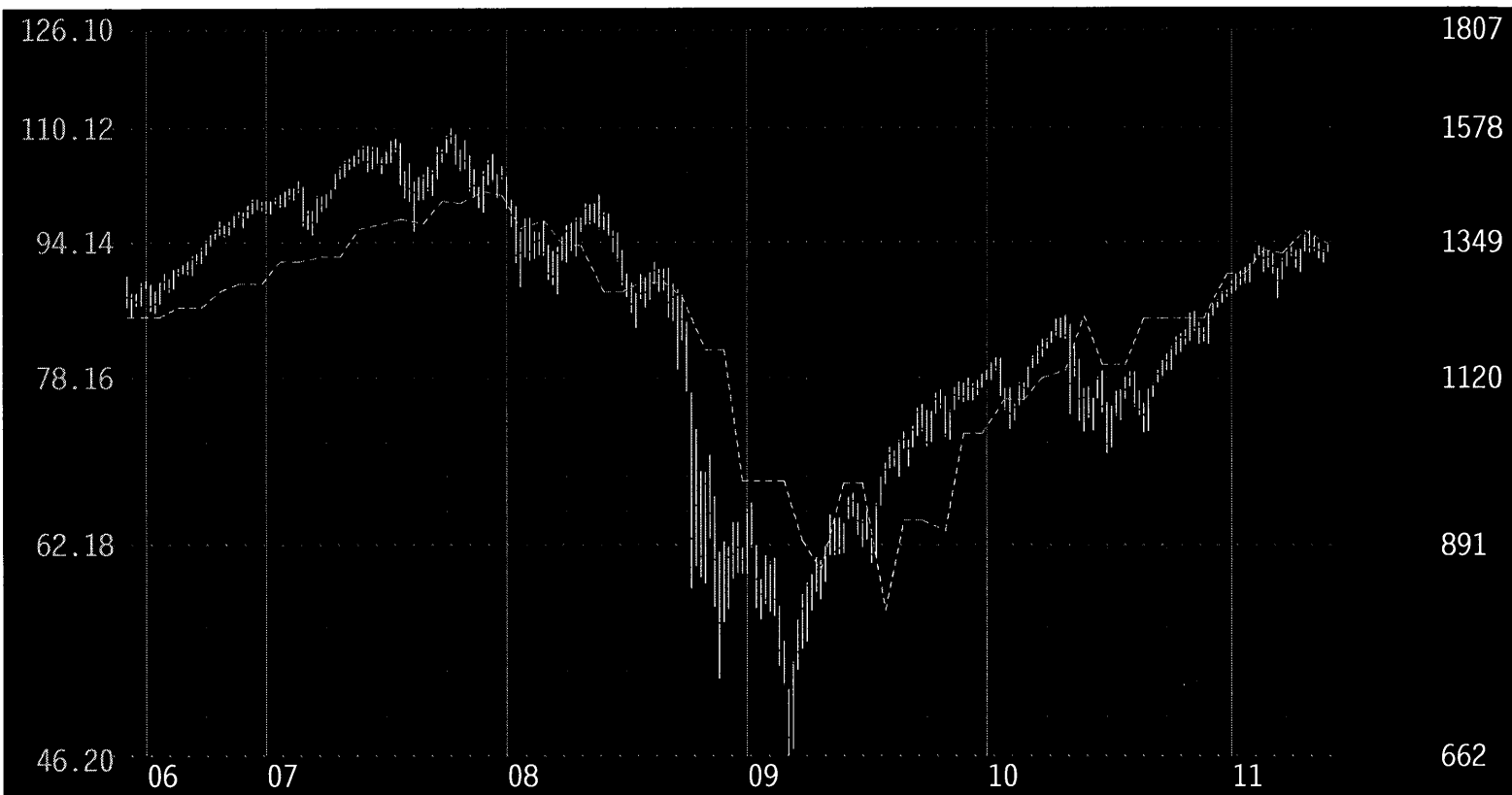
COMPANY NAME	BETA SPX	DIVIDEND YIELD	DIVIDEND PAYOUT RATIO	DVD LT FUTURE GR RATE	DIVIDEND 5 YEAR GROWTH	EARNINGS ESTIMATE CURR YR	EARNINGS ESTIMATE NEXT YR	ERN %CHG 12 VS 11	EARNINGS 3 YR HIST GR RATE	ERNS LT FUTURE GR RATE	P/E EST NEXT YR	# SHARES OUTSTD'G ( '000)	FREE CASHFLOW YIELD	% OF NET DEBT TO CAPITAL
COMCAST_PFD	+53	6.9%	-	-	-	-	-	-	-	-	-	-	-	-
AT & T_PFD	+24	6.0%	-	-	-	-	-	-	-	-	-	-	-	-
COMCAST 'A'	+1.13	1.8%	30%	+15%	+58%	1.60	1.91	+19%	+19%	+15%	13.2	2,776,499	6.6%	46%
AT&T	+1.76	5.4%	75%	+5%	+6%	2.36	2.54	+7%	-11%	+5%	12.4	5,911,433	3.0%	37%
PRUDENTIAL FINL JR	+1.74	8.1%	-	-	-	-	-	-	-	-	-	-	-	-
PRUDENTIAL FIN'L	+2.25	1.8%	17%	0%	-4%	6.65	7.69	+16%	+19%	+11%	8.3	486,000	19.3%	27%
SEASSPAN PF C	-	.0%	-	-	-	-	-	-	-	-	-	-	-	-
SEASSPAN	+1.81	2.9%	39%	-	-	1.26	1.79	+43%	-8%	+22%	9.7	68,601	-49.3%	60%
APPLE	+1.03	.0%	0%	-	-	24.72	28.63	+16%	+50%	+18%	12.1	921,278	5.1%	0%
ABBOTT LABORATORIES	+1.46	3.7%	42%	+8%	+10%	4.60	4.95	+8%	+12%	+8%	10.6	1,547,582	6.2%	43%

# S&P 500 (SPX)

25 Broadway  
 New York, NY 10004  
 (212) 438-3534 Investor Contact: Carol Levine, S&P Index Services  
 www.standardandpoors.com

May 31, 2011 ..... 1345.2

Price Chg - YTD 7.0%  
 Dividend Yld 1.7%  
 P/E..... 14.4



## Capitalization

% LT Debt to Total Cap 33%  
 Owned by Institutions 74%  
 Market Capitalization 92.4 Bil

## Business Overview

The "500" index accounts for more than 80% of the aggregate value of common stocks traded on the NYSE. A key feature of the index is that it is market-value weighted.

## Earnings

	\$	%	
Latest Quarter (Mar 11)	26.63	up 35%	
Latest 12 Months	93.60	up 30%	-3%

## First Call Mean

	\$	%	LT Future
Current Quarter (Jun 11)	22.98	up 6%	
Year Ended Dec. 11	94.31	up 9%	NA
Year Ended Dec. 12	102.44	up 9%	

## Revenues (per share)

	\$	%	5 Yr Historical
Latest Quarter (Mar 11)	\$264.59	up 10%	
Latest 12 Months	\$1029.91	up 8%	1%

## Dividends

	\$	%	5 Yr Historical
Indicated Rate & Yield	23.44	1.7%	
Increases Last 5 Yrs	2		-3%

## Key Ratios & Measures

	5 Year Range	Current
P/E	9 - 20	14.4
Price to Book	1.3 - 3	2.3
Price to Cash Flow	6 - 12	9.8
Price to Sales	.6 - 1.7	1.31
Return on Equity	10.5% - 17.9%	16.0%

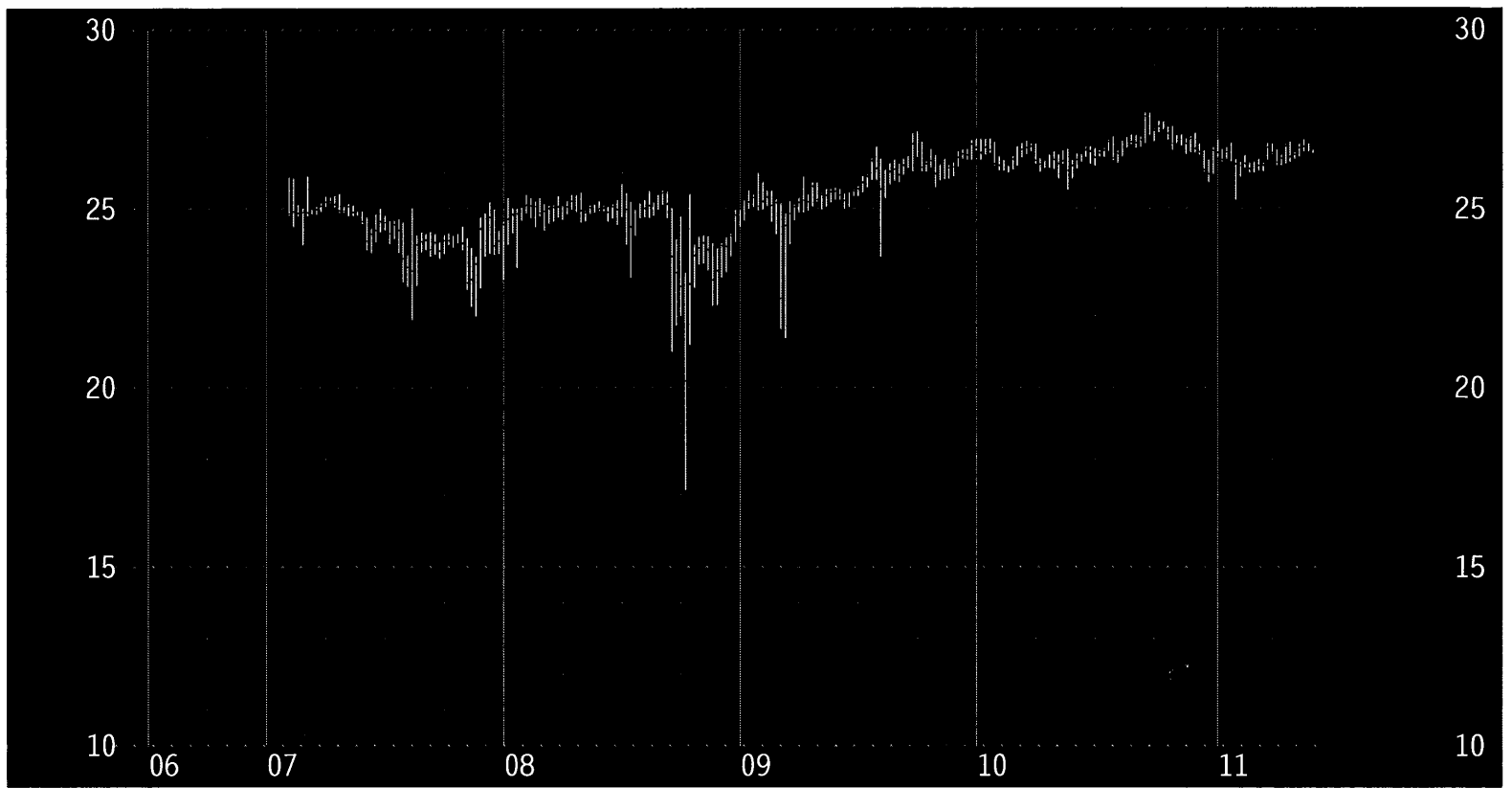
**BETA S&P 500**

**1.00**

# AT & T Pfd (ATT)

May 31, 2011 ..... 26.52

Price Chg - YTD           -.3%  
 Dividend Yld            6.0%  
 P/E.....                 NA



## Capitalization

% LT Debt to Total Cap	NA
Owned by Institutions	0%
Market Capitalization	NA
Avg Daily Vol(Last 30 days)	100,589

## Business Overview

This is a preferred stock for T. Please refer to common stock ticker 'T' for Key Stat info other than dividends.

## Earnings

Lastest Quarter	\$	%
Latest 12 Months	NA	NA

## First Call Mean

Current Quarter	NA	NA
Current Year	NA	NA
Next Year	NA	NA

## Revenues

Latest Quarter	NA	NA
Latest 12 Months	NA	NA

## Dividends

Indicated Rate & Yield	1.59	6.0%
Increases Last 5 Yrs	1	

## Growth Rates

5 Yr Historical

NA

## LT Future

NA

## 5 Yr Historical

NA

## 5 Yr Historical

NA

## Key Ratios & Measures

	<b>5 Year Range</b>	<b>Current</b>
P/E	NM	NM
Price to Book	NA	NA
Price to Cash Flow	NA	NA
Price to Sales	NA	NA
Return on Equity	NA	NA

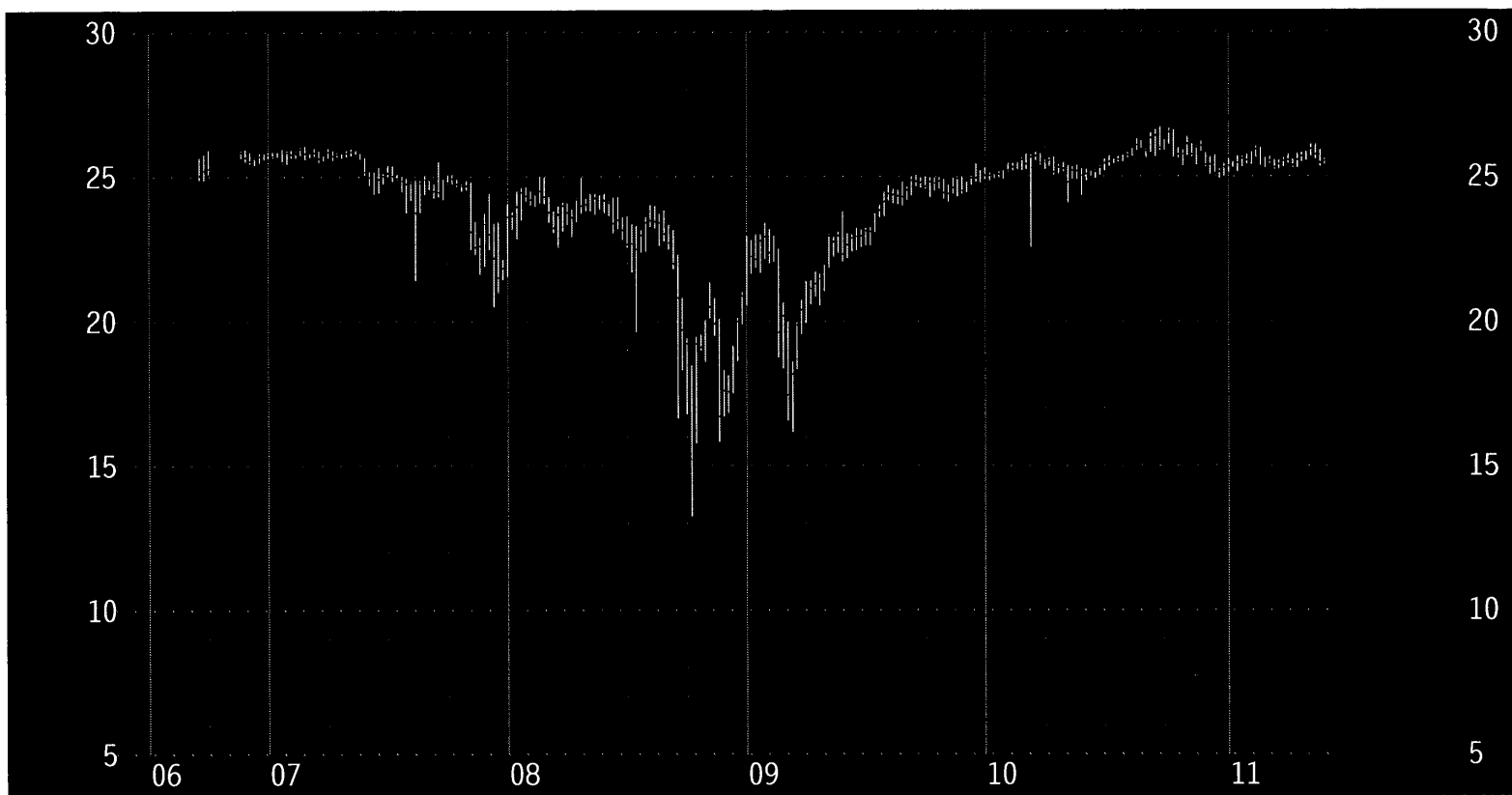
## BETA S&P 500

0.24

# Comcast Pfd (CCW)

May 31, 2011 ..... 25.53

Price Chg - YTD .9%  
 Dividend Yld 6.9%  
 P/E..... NA



## Capitalization

% LT Debt to Total Cap	NA
Owned by Institutions	0%
Market Capitalization	NA
Avg Daily Vol(Last 30 days)	46,029

## Business Overview

This is a preferred stock for CMCSA. Please refer to common stock ticker 'CMCSA' for Key Stat info other than dividends.

## Earnings

Lastest Quarter	\$	%
Latest 12 Months	NA	NA

## First Call Mean

Current Quarter	NA	NA
Current Year	NA	NA
Next Year	NA	NA

## Revenues

Latest Quarter	NA	NA
Latest 12 Months	NA	NA

## Dividends

Indicated Rate & Yield	1.75	6.9%
Increases Last 5 Yrs	1	

## Growth Rates

5 Yr Historical

NA

## LT Future

NA

## 5 Yr Historical

NA

## 5 Yr Historical

NA

## Key Ratios & Measures

	5 Year Range	Current
P/E	NM	NM
Price to Book	NA	NA
Price to Cash Flow	NA	NA
Price to Sales	NA	NA
Return on Equity	NA	NA

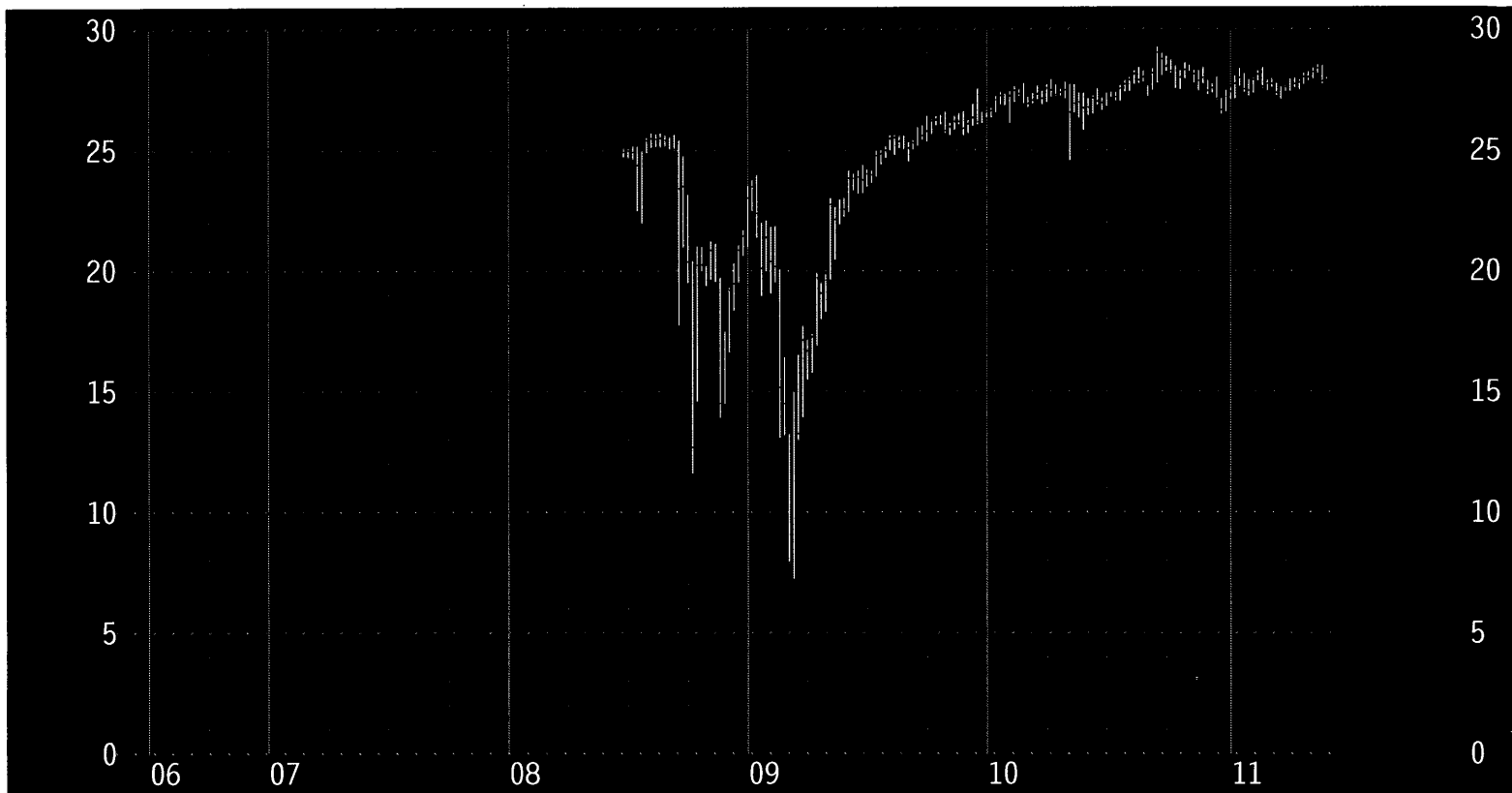
## BETA S&P 500

0.53

# Prudential Finl Jr (PHR)

May 31, 2011 ..... 27.88

Price Chg - YTD 1.4%  
 Dividend Yld 8.1%  
 P/E..... NA



## Capitalization

% LT Debt to Total Cap NA  
 Owned by Institutions 0%  
 Market Capitalization NA  
 Avg Daily Vol(Last 30 days) 48,978

## Business Overview

This is a preferred stock for PUK. Please refer to common stock ticker 'PUK' for Key Stat info other than dividends.

## Earnings

Lastest Quarter  
 Latest 12 Months

\$	%
NA	NA
NA	NA

## Growth Rates

5 Yr Historical  
 NA

## First Call Mean

Current Quarter  
 Current Year  
 Next Year

NA	NA
NA	NA
NA	NA

## LT Future

NA

## Revenues

Latest Quarter  
 Latest 12 Months

NA	NA
NA	NA

## 5 Yr Historical

NA

## Dividends

Indicated Rate & Yield  
 Increases Last 5 Yrs

2.25	8.1%
1	

## 5 Yr Historical

NA

## Key Ratios & Measures

P/E  
 Price to Book  
 Price to Cash Flow  
 Price to Sales  
 Return on Equity

## 5 Year Range

NM	NM
NA	NA
NA	NA
NA	NA
NA	NA

## Current

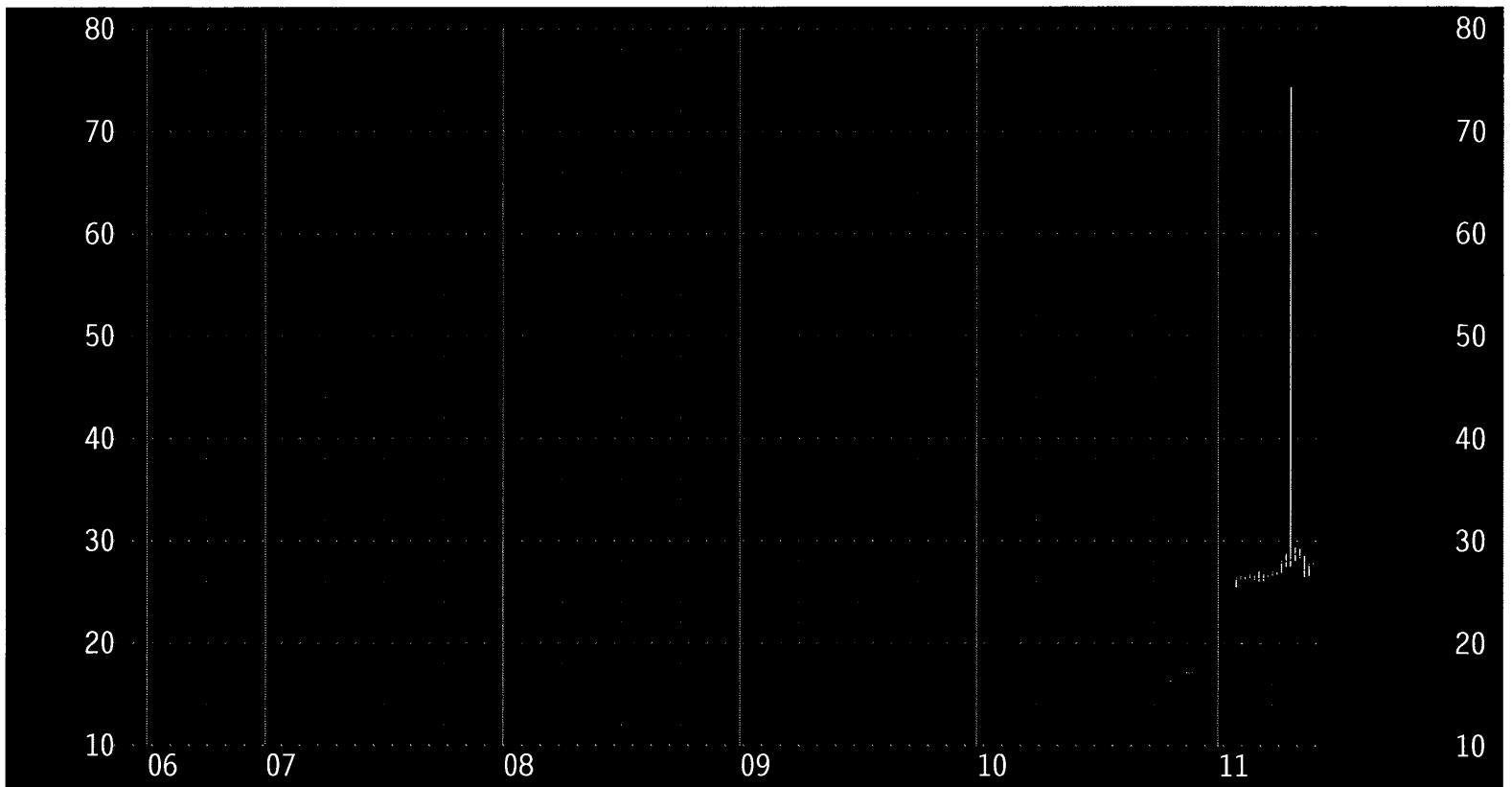
## BETA S&P 500

1.74

# Seaspan Pf C (SSWXC)

May 31, 2011 ..... 27.65

Price Chg - YTD 5.7%  
 Dividend Yld 0%  
 P/E..... NA



### Capitalization

% LT Debt to Total Cap NA  
 Owned by Institutions 0%  
 Market Capitalization NA  
 Avg Daily Vol(Last 30 days) 92,235

### Business Overview

This is a preferred stock for Seaspan Please refer to common stock ticker 'SSW' for Key Stat info other than dividends.

### Earnings

Lastest Quarter NA  
 Latest 12 Months NA

### First Call Mean

Current Quarter NA  
 Current Year NA  
 Next Year NA

### Revenues

Latest Quarter NA  
 Latest 12 Months NA

### Dividends

Indicated Rate & Yield NA  
 Increases Last 5 Yrs NA

### Growth Rates

5 Yr Historical

NA

### LT Future

NA

### 5 Yr Historical

NA

### 5 Yr Historical

NA

### Key Ratios & Measures

P/E  
 Price to Book  
 Price to Cash Flow  
 Price to Sales  
 Return on Equity

### 5 Year Range

NM  
 NA  
 NA  
 NA  
 NA

### Current

NM  
 NA  
 NA  
 NA  
 NA

### BETA S&P 500

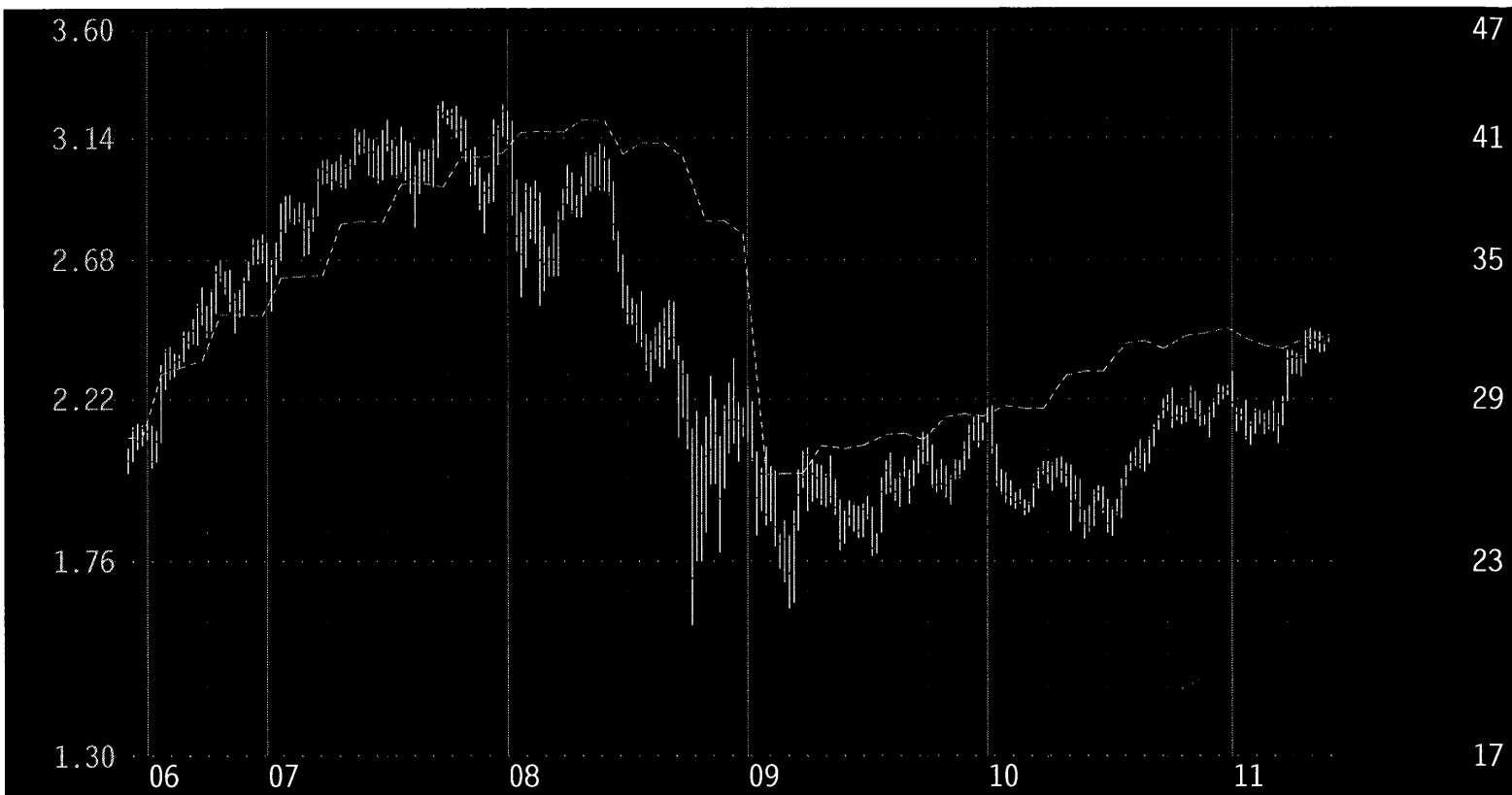
NA

# AT&T (T)

208 S. Akard St.  
 Dallas, Texas 75202  
 (210) 821-4105 Investor Contact: McCall Butler  
 www.att.com

May 31, 2011 ..... 31.56

Price Chg - YTD 7.4%  
 Dividend Yld 5.4%  
 P/E..... 13.8



## Capitalization

% LT Debt to Total Cap 34%  
 Owned by Institutions 59.4%  
 Market Capitalization 187 Bil  
 Avg Daily Vol(Last 30 days) 22,691,280

## Business Overview

AT&T Inc.. provides comm services and products. It operates through four segments: Wireless segment provides wireless voice and data communications services across the U.S. and, through roaming agreements in a substantial number of foreign countries and is held by a wireless subsidiary of the Group. Wireline segment provides primarily landline telecommunications services to residential, business and governmental customers both domestically and internationally. Advertising and Publishing segment provide services related to directory advertising and publishing. This segment publishes and sells Yellow and White Pages directories. Other segment provides the results from Sterling Commerce Inc (Sterling), corporate and other operations.

## Earnings

	\$	%
Latest Quarter (Mar 11)	.57	dn 3%
Latest 12 Months	2.28	up 3%

## First Call Mean

	\$	%
Current Quarter (Jun 11)	.60	dn 2%
Year Ended Dec. 11	2.36	up 3%
Year Ended Dec. 12	2.54	up 7%

## Revenues

	\$	%
Latest Quarter (Mar 11)	31.2 Bil	up 2%
Latest 12 Months	125 Bil	up 2%

## Dividends

	\$	%
Indicated Rate & Yield	1.72	5.4%
Increases Last 5 Yrs	5	

## Key Ratios & Measures

	5 Year Range	Current
P/E	7 - 18	13.8
Price to Book	1.2 - 2.6	1.6
Price to Cash Flow	3.3 - 6.8	5.7
Price to Sales	1 - 3.2	1.49
Return on Equity	10.4% - 18.2%	12.6%

## Growth Rates

5 Yr Historical

-1%

## LT Future

5%

## 5 Yr Historical

13%

## 5 Yr Historical

6%

BETA S&P 500

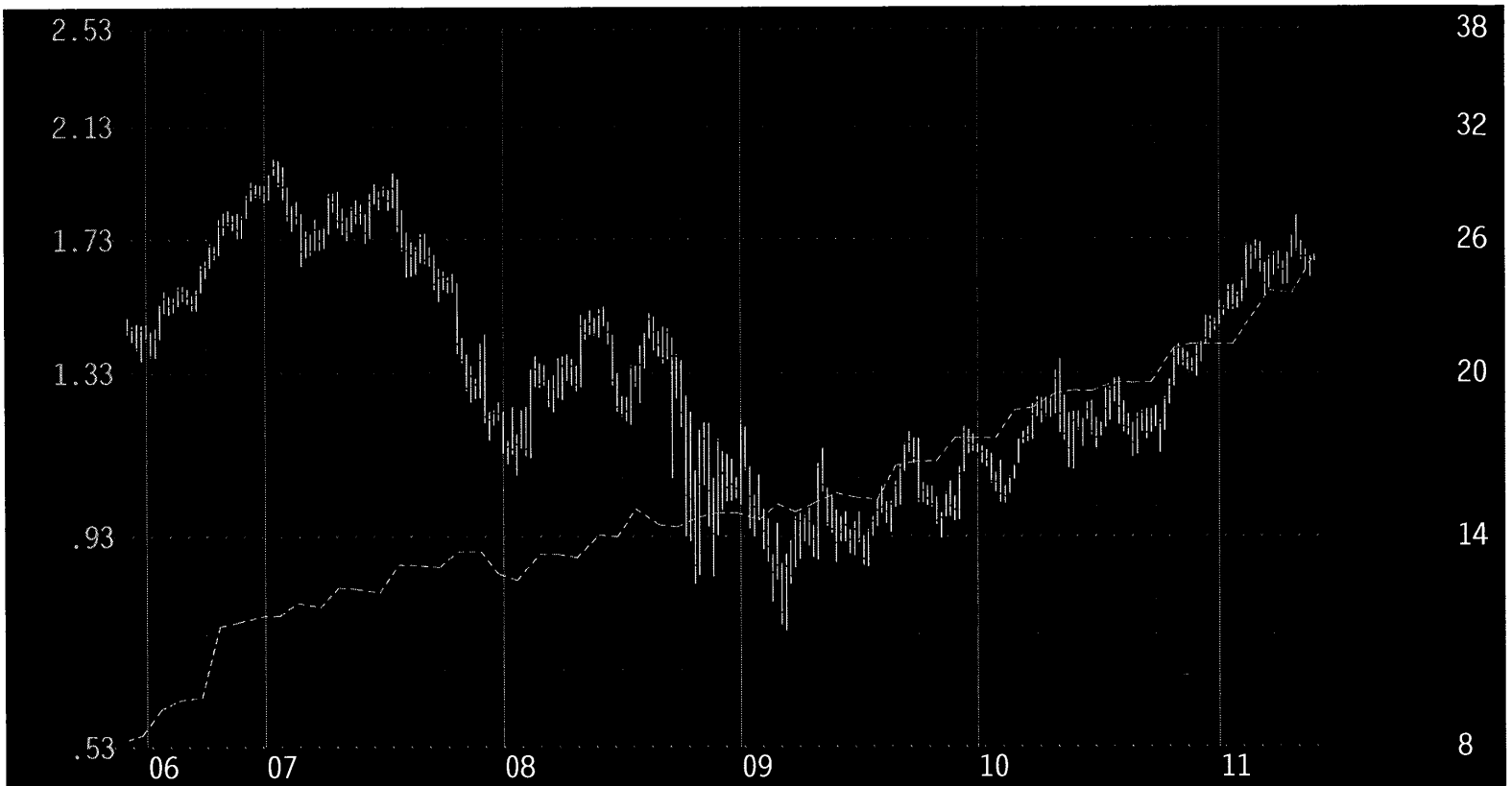
0.76

# Comcast 'A' (CMCSA)

May 31, 2011 ..... 25.24

One Comcast Center  
 Philadelphia, PA 19103-2838  
 (215) 286-1700 Investor Contact: Marlene S. Dooner, VP IR  
 www.comcast.com

Price Chg - YTD 14.9%  
 Dividend Yld 1.8%  
 P/E..... 18.6



## Capitalization

% LT Debt to Total Cap 45%  
 Owned by Institutions 62.4%  
 Market Capitalization 70.1 Bil  
 Avg Daily Vol(Last 30 days) 16,639,230

## Business Overview

Comcast Corp.. (Comcast) is a provider of video, high-speed Internet and phone services (cable services), offering a variety of entertainment, information and communications services to residential and commercial customers. The Company operates in two segments: Cable and Programming. The Cable segment, which generates approximately 95% of the Company's consolidated revenue, manages and operates cable systems in the United States. The Cable segment also includes the operations of its regional sports networks. The Programming segment consists primarily of its consolidated national programming networks, E!, Golf Channel, VERSUS, G4 and Style.

## Earnings

	\$	%
Latest Quarter (Mar 11)	.36	up 16%
Latest 12 Months	1.36	up 12%

## First Call Mean

	\$	%
Current Quarter (Jun 11)	.41	up 25%
Year Ended Dec. 11	1.60	up 22%
Year Ended Dec. 12	1.91	up 19%

## Revenues

	\$	%
Latest Quarter (Mar 11)	12.1 Bil	up 32%
Latest 12 Months	40.9 Bil	up 13%

## Dividends

	\$	%
Indicated Rate & Yield	.45	1.8%
Increases Last 5 Yrs	4	

## Key Ratios & Measures

	5 Year Range	Current
P/E	11 - 59	18.6
Price to Book	.7 - 2.2	1.6
Price to Cash Flow	3.2 - 11	6.3
Price to Sales	.9 - 3.9	1.71
Return on Equity	6.1% - 8.7%	8.4%

## Growth Rates

5 Yr Historical

23%

## LT Future

15%

## 5 Yr Historical

10%

## 5 Yr Historical

58%

BETA S&P 500

1.13

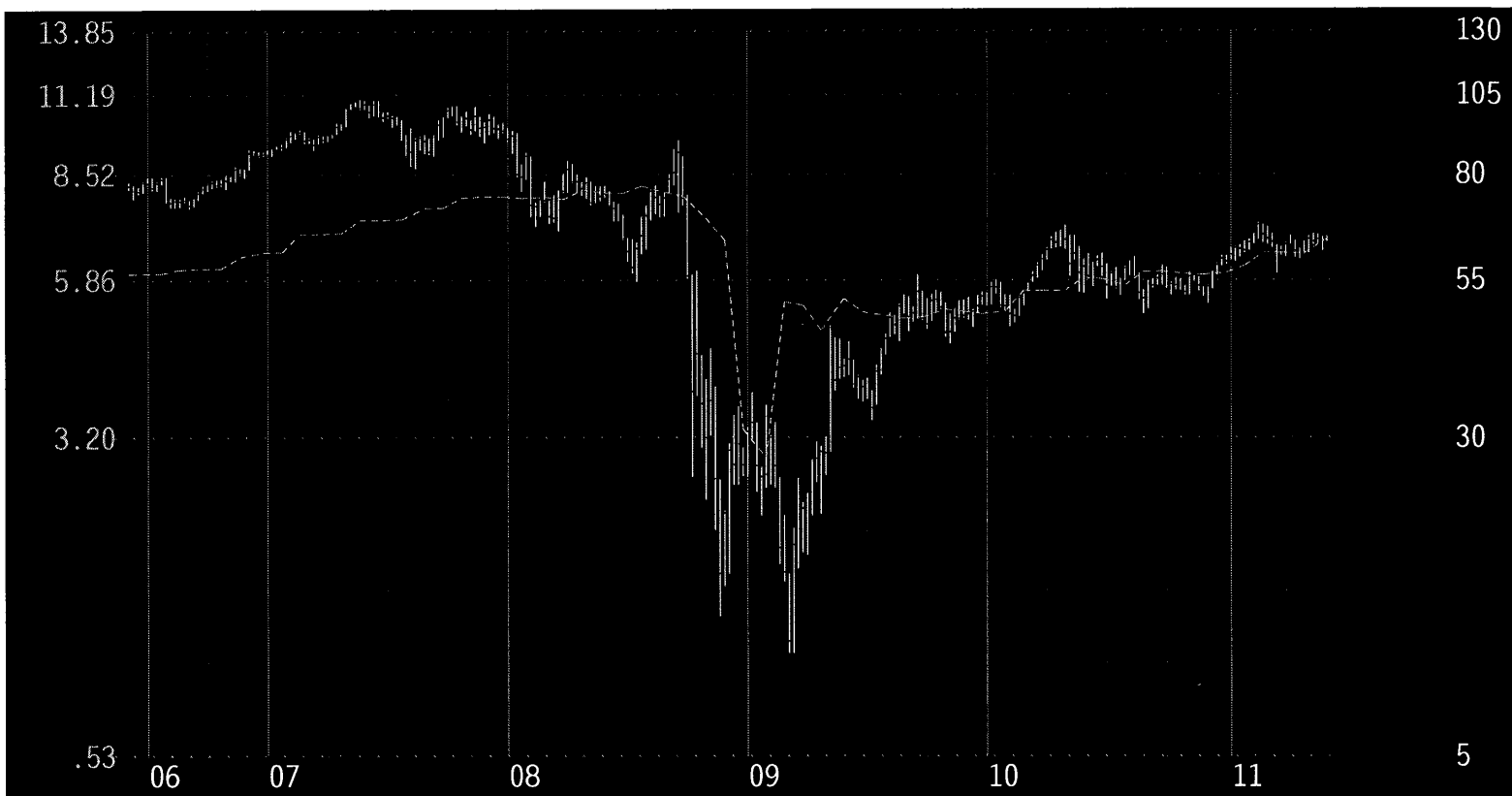


# Prudential Fin'l (PRU)

May 31, 2011 ..... 63.78

751 Broad Street  
 Newark, NJ 07102  
 (973) 802-6000 Investor Contact: Ruth Hiatt  
 www.investor.prudential.com

Price Chg - YTD 8.6%  
 Dividend Yld 1.8%  
 P/E..... 9.4



## Capitalization

% LT Debt to Total Cap 42%  
 Owned by Institutions 60.8%  
 Market Capitalization 31 Bil  
 Avg Daily Vol(Last 30 days) 2,875,136

## Business Overview

Prudential Financial Inc.. provides life insurance, mutual funds, annuities, pension and retirement related services and real estate services. It operates through three divisions: Insurance, Investment and International Insurance and Investments. The Insurance division provides individual life insurance and fixed annuity products and group Insurance services. The Investment division provides Asset Management, Financial Advisory and Retirement solutions, which include services plans, structured settlement annuities and group annuities. The International division provides individual life insurance products primarily in Japan and Korea and also in other foreign countries. On 10-Oct-2008 the group acquired MullinTBG Insurance Agency Services LLC.

## Earnings

	\$	%	
Latest Quarter (Mar 11)	1.69	up 13%	
Latest 12 Months	6.80	up 13%	-4%

## First Call Mean

	\$	%	LT Future
Current Quarter (Jun 11)	1.56	up 4%	
Year Ended Dec. 11	6.65	up 1%	11%
Year Ended Dec. 12	7.69	up 16%	

## Revenues

	\$	%	5 Yr Historical
Latest Quarter (Mar 11)	9.2 Bil	up 25%	
Latest 12 Months	34 Bil	up 25%	4%

## Dividends

	\$	%	5 Yr Historical
Indicated Rate & Yield	1.15	1.8%	
Increases Last 5 Yrs	2		-4%

## Key Ratios & Measures

	5 Year Range	Current
P/E	2 - 35	9.4
Price to Book	.1 - 2	.9
Price to Cash Flow	1.7 - 23.8	9.7
Price to Sales	.1 - 1.5	0.91
Return on Equity	11.1% - 15.9%	11.1%

**BETA S&P 500**

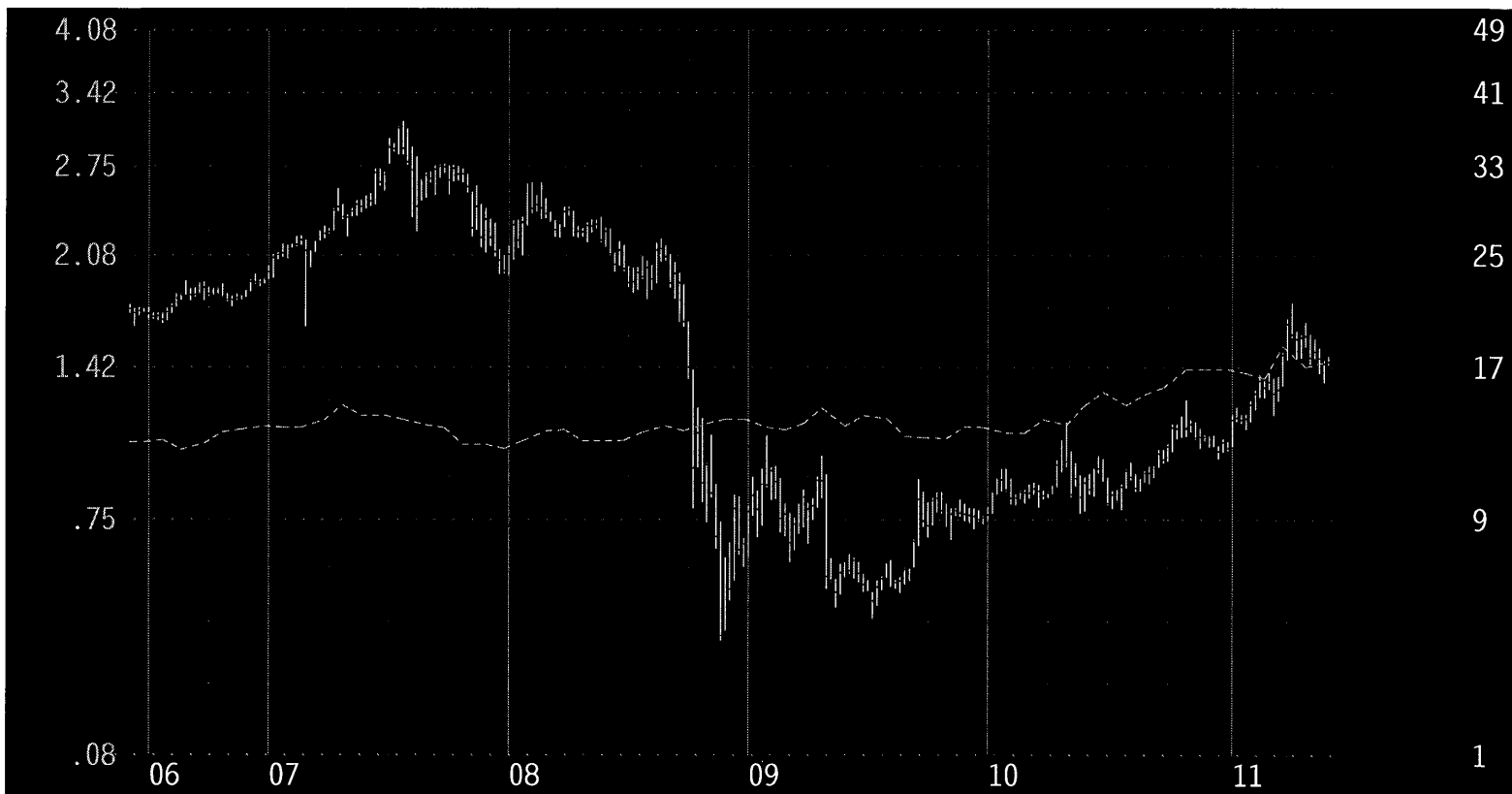
**2.25**

# Seaspan (SSW)

Bupa Ctr, 141 Connaught Rd (W)  
 Hong Kong, China  
 011-852-2540-1686 Investor Contact: Sai W. Chu  
 www.seaspan.com

May 31, 2011 ..... 17.36

Price Chg - YTD 39.8%  
 Dividend Yld 2.9%  
 P/E..... 16.1



## Capitalization

% LT Debt to Total Cap	65%
Owned by Institutions	20%
Market Capitalization	1.2 Bil
Avg Daily Vol(Last 30 days)	457,343

## Business Overview

Seaspan Corp.. The Company's principal activity is to own containerships and charters them pursuant to long-term, fixed-rate charters. The Company deploy all vessels on long-term, fixed-rate time charters to take advantage of the stable cash flow and high utilization rates that are typically associated with long-term time charters. The Company currently owns and operates a fleet of 29 containerships.

## Earnings

	\$	%	Growth Rates
Latest Quarter (Mar 11)	.24	up 20%	5 Yr Historical
Latest 12 Months	1.08	up 21%	-1%

## First Call Mean

	\$	%	LT Future
Current Quarter (Jun 11)	.28	up 20%	
Year Ended Dec. 11	1.26	up 21%	22%
Year Ended Dec. 12	1.79	up 43%	

## Revenues

	\$	%	5 Yr Historical
Latest Quarter (Mar 11)	121 Mil	up 51%	
Latest 12 Months	448 Mil	up 48%	31%

## Dividends

	\$	%	5 Yr Historical
Indicated Rate & Yield	.50	2.9%	
Increases Last 5 Yrs	3		NA

## Key Ratios & Measures

	5 Year Range	Current
P/E	3 - 55	16.1
Price to Book	.3 - 2.9	1.4
Price to Cash Flow	1.8 - 15.5	6.9
Price to Sales	1.1 - 10.7	2.66
Return on Equity	6.4% - 16.1%	6.4%

**BETA S&P 500**

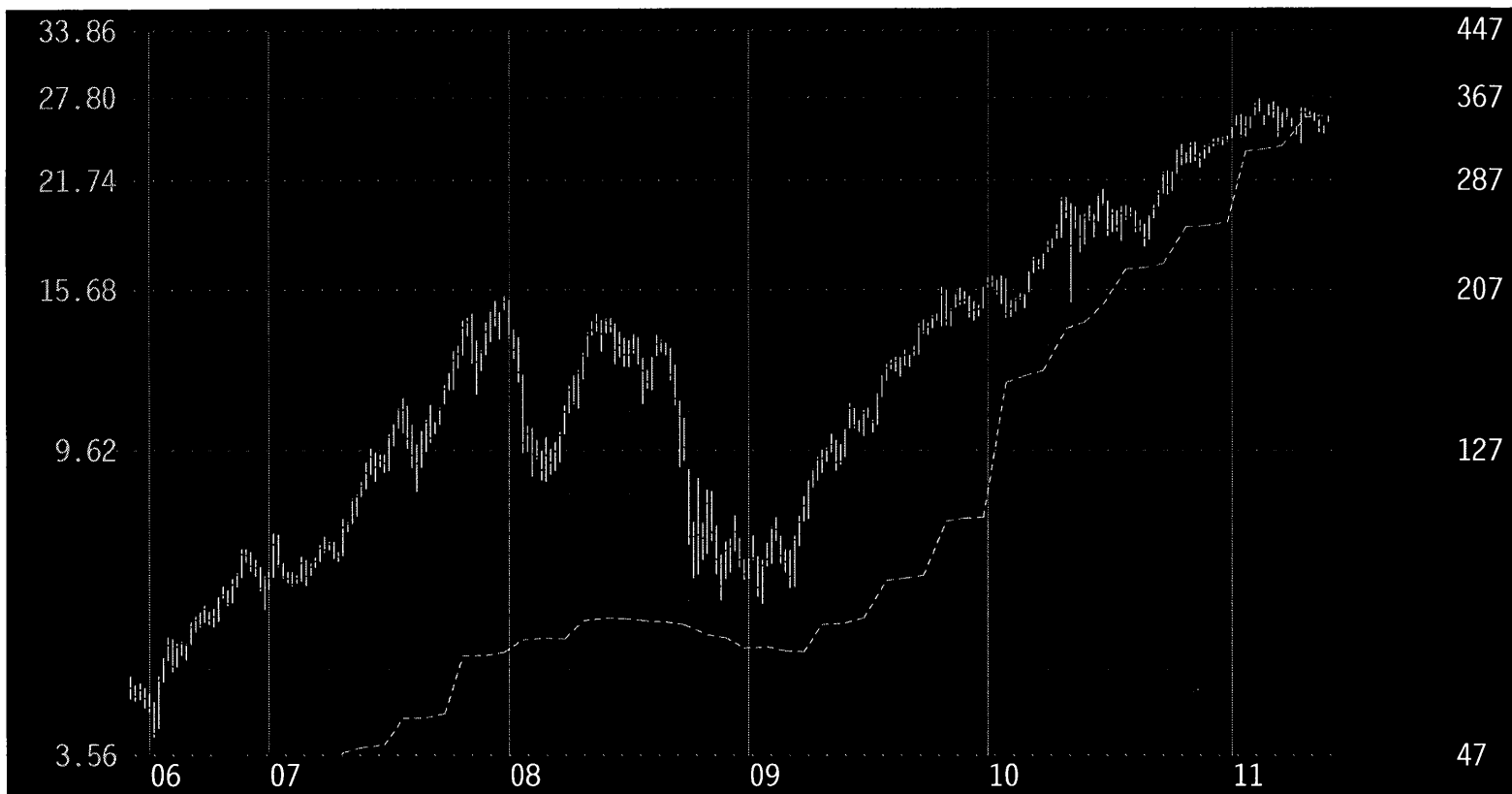
**1.81**

# Apple (AAPL)

1 Infinite Loop  
 Cupertino, CA 95014  
 (408) 996-1010 Investor Contact: Nancy Paxton, (408) 974-5420  
 www.apple.com

May 31, 2011 ..... 347.83

Price Chg - YTD 7.8%  
 Dividend Yld 0%  
 P/E..... 16.6



## Capitalization

% LT Debt to Total Cap 0%  
 Owned by Institutions 73.1%  
 Market Capitalization 320 Bil  
 Avg Daily Vol(Last 30 days) 13,645,450

## Business Overview

Apple Inc.. designs, manufactures & markets a range of personal comp, mobile comm & media devices, portable digital music players & sells a range of related sftwr, services, peripherals, networking solns, 3rd-party digital content & applications. It's prods & services include Macintosh (Mac) comp, iPhone, iPad, iPod, Apple TV, Xserve, Mac OS X & iOS operating systems, 3r-party digital content & applications through the iTunes Store & a range of accessory, service & support offerings. The Co sells its prods globally through its retail & online stores, direct sales force & 3rd-party cellular network carriers, wholesalers, retailers & value-added resellers. In Sept 25, 2010, the Co had opened a total of 317 retail stores, including 233 stores in the US & 84 stores internationally.

## Earnings

	\$	%
Latest Quarter (Mar 11)	6.40	up 92%
Latest 12 Months	20.98	up 78%

## First Call Mean

	\$	%
Current Quarter (Jun 11)	5.61	up 60%
Year Ended Sep. 11	24.72	up 63%
Year Ended Sep. 12	28.63	up 16%

## Revenues

	\$	%
Latest Quarter (Mar 11)	24.7 Bil	up 83%
Latest 12 Months	87.5 Bil	up 71%

## Dividends

	\$	%
Indicated Rate & Yield	0	0%
Increases Last 5 Yrs	NM	

## Key Ratios & Measures

	5 Year Range	Current
P/E	10 - 52	16.6
Price to Book	2.5 - 12.2	5.4
Price to Cash Flow	7.9 - 47.4	15.5
Price to Sales	2 - 7.4	3.66
Return on Equity	27.2% - 38.3%	38.3%

## Growth Rates

5 Yr Historical

60%

## LT Future

18%

## 5 Yr Historical

36%

## 5 Yr Historical

NA

**BETA S&P 500**

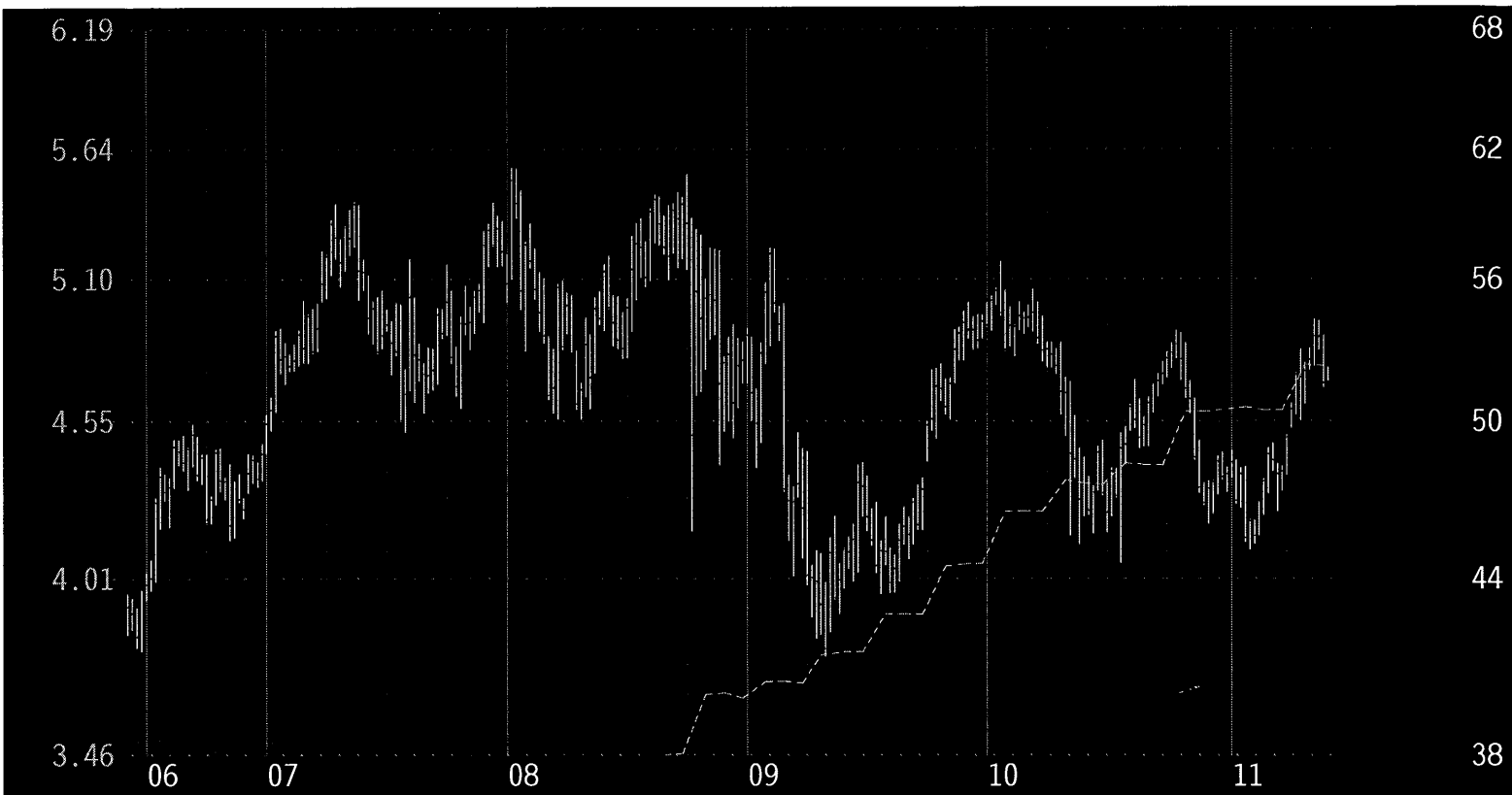
**1.03**

# Abbott Laboratories (ABT)

100 Abbott Park Road  
 Abbott Park, IL 60064-6400  
 (847) 937-6100 Investor Contact: John B. Thomas, VP IR  
 www.abbott.com

May 31, 2011 ..... 52.25

Price Chg - YTD 9.1%  
 Dividend Yld 3.7%  
 P/E..... 12.2



## Capitalization

% LT Debt to Total Cap 34%  
 Owned by Institutions 69.1%  
 Market Capitalization 80.9 Bil  
 Avg Daily Vol(Last 30 days) 8,084,248

## Business Overview

Abbott Laboratories.. engaged in discovery, dvlpmt, mfr & sale of diversified line of hlthcr prods. The Co operates in 4 segments: Pharm Prods, Diagnostic Prods, Nutritional Prods & Vascular Prods. Its Pharm Prods include a line of adult & pediatric pharms mfd, marketed & sold. Its Diagnostic Prods include a line of diagnostic syst & tests mfd, marketed & sold to blood banks, hospitals, comm'l laboratories, clinics, physicians' offices, alternate-care testing sites & plasma protein therapeutic cos. The Co's Nutritional Prods include a line of pediatric & adult nutritional prods mfd, marketed & sold worldwide. Its Vascular Prods include a line of coronary, endovascular & vessel closure devices for the treatment of vascular disease mfd, marketed & sold worldwide.

## Earnings

Latest Quarter (Mar 11) .91 up 8%  
 Latest 12 Months 4.27 up 11%

## First Call Mean

Current Quarter (Jun 11) 1.11 up 10%  
 Year Ended Dec. 11 4.60 up 10%  
 Year Ended Dec. 12 4.95 up 8%

## Revenues

Latest Quarter (Mar 11) 9 Bil up 17%  
 Latest 12 Months 36.5 Bil up 15%

## Dividends

Indicated Rate & Yield 1.92 3.7%  
 Increases Last 5 Yrs 5 10%

## Key Ratios & Measures

	5 Year Range	Current
P/E	10 - 24	12.2
Price to Book	2.8 - 5.5	3.6
Price to Cash Flow	7.4 - 14.8	8.6
Price to Sales	1.9 - 4.1	2.21
Return on Equity	20.4% - 29.1%	29.1%

## Growth Rates

5 Yr Historical

13%

## LT Future

8%

## 5 Yr Historical

11%

## 5 Yr Historical

10%

BETA S&P 500

0.46