

Solve for the indicated letter.

$$a = 7b, \text{ for } b$$

The solution is $b = \square$.

UNDO



More ?

Enter any number or expression in the edit field, then click Next Question or Previous Question.

Translate to an algebraic expression.

The product of 25% and some number

The translation is .

(Type the percentage as a decimal. Use q to represent some number.)

UNDO



More ?

Test Info

Time Limit No Time Limit

0 of 56 questions complete

This question is worth 1 point

Enter any number or expression in the edit field, then click Next Question or Previous Question.

Previous Question

Next Question

Submit Test

Solve.

$$0.3x + 1 \leq 0.7x - 6$$

The solution is $\{x \mid x \square \square\}$.

(Simplify your answer. Type an inequality symbol; then type an integer or a decimal.)

Enter any number or expression in each of the edit fields, then click Next or Previous Question.

Solve using the multiplication principle.
Don't forget to perform a check.

$$10x = -90$$

The solution is $x = \square$.

Enter any number or expression in the edit field, then click Next Question or Previous Question.

Soybean meal is 14% protein; cornmeal is 7% protein. How many pounds of each should be mixed together in order to get 280-lb mixture that is 13% protein?

How many pounds of the cornmeal should be in the mixture?

pounds

How many pounds of the soybean meal should be in the mixture?

pounds

Enter any number or expression in each of the edit fields, then click Next or Previous Question.

Previous Question

Next Question

Test Info

Time Limit No Time Limit

0 of 56 questions complete

This question is worth 1 point

Submit Test

UNDO



More ?

Simplify.

$$-8[18 - (89 - 60)]$$

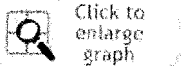
$$-8[18 - (89 - 60)] = \square$$

Enter any number or expression in the edit field, then click Next Question or Previous Question.

Graph the line containing the given pair of points and find the slope.

$(4, 3), (-5, -3)$

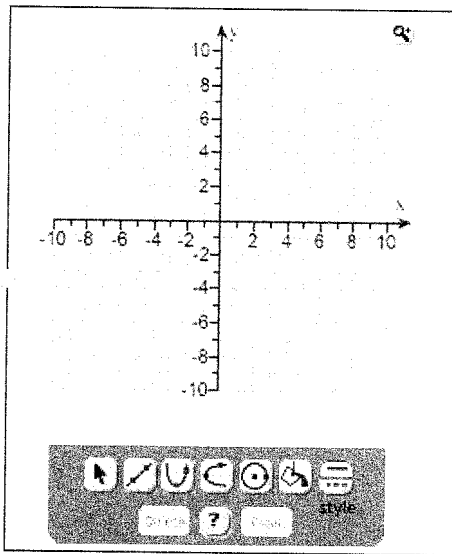
Use the graphing tool on the right to graph the line. Make sure to use the two given points when graphing the line.



Find the slope of the line.

$m =$

(Simplify your answer. Type an integer or a fraction. Type N if the slope is undefined.)



Test Info

Time Limit No Time Limit

0 of 56 questions complete

This question is worth 1 point

To pop up your graph, click the Click to enlarge graph button.

Previous Question

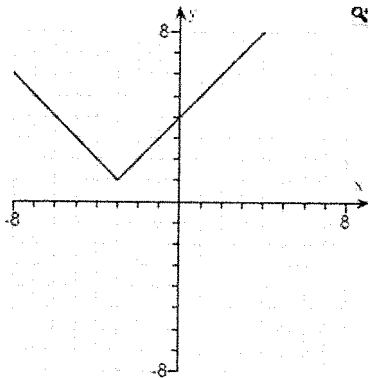
Next Question

Submit Test

Determine if the graph is a function.

Is this the graph of a function?

- Yes
 No



Test Info

Time Limit No Time Limit

0 of 56 questions complete

This question is worth 1 point

Click to select your answer, then click Next Question or Previous Question.

Previous Question

Next Question

Submit Test

UNDO

$\frac{\square}{\square}$ $\frac{\square}{\square}$

$\frac{\square}{\square}$ $\frac{\square}{\square}$

$\sqrt{\square}$ $\sqrt{\square}$

$\frac{\square}{\square}$ (\square)

More ?

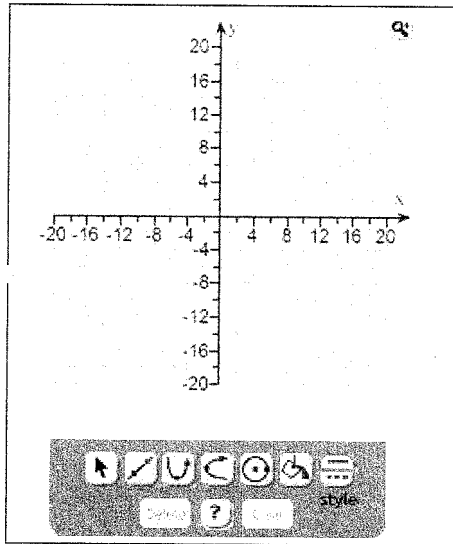
Graph the equation using the slope and the y-intercept.

$$y = \frac{6}{5}x + 2$$

Use the graphing tool to graph the line.
Use the slope and y-intercept when drawing the line.



Click to enlarge graph



Test Info

Time Limit No Time Limit

0 of 56 questions complete

This question is worth 1 point

To pop up your graph, click the Click to enlarge graph button.

Previous Question

Next Question

Submit Test

Solve.

$$5 > -3x + 4 \text{ or } 12 \leq -3x + 5$$

Choose the solution to the inequality.

- A. $\left[-\infty, -\frac{7}{3}\right]$
- B. $\left[-\frac{1}{3}, \infty\right)$
- C. $\left[-\infty, -\frac{7}{3}\right] \cup \left[-\frac{1}{3}, \infty\right)$
- D. $(-\infty, \infty)$

Test Info

Time Limit No Time Limit

0 of 56 questions complete

This question is worth 1 point

Click to select your answer, then click Next Question or Previous Question.

Previous Question

Next Question

Submit Test

In 1995, the life expectancy of males in a certain country was 72.4 years. In 2002, it was 74.9 years. Let E represent the life expectancy in year t and let t represent the number of years since 1995.

The linear function $E(t)$ that fits the data is

$$E(t) = \square t + \square.$$

(Round to the nearest tenth.)

Use the function to predict the life expectancy of males in 2004.

$$E(9) = \square$$

(Round to the nearest tenth.)

Enter any number or expression in each of the edit fields, then click Next or Previous Question.

Previous Question

Next Question

Submit Test

Test Info

Time Limit No Time Limit

0 of 56 questions complete

This question is worth 1 point

UNDO



More ?

On three consecutive passes, a football team gains 9 yards, loses 18 yards, and gains 32 yards. What number represents the total net yardage?

The total net yardage is yards.

Enter any number or expression in the edit field, then click Next Question or Previous Question.

The equation $y = -1777x + 27,153$ can be used to predict the number y of gun deaths in the United States x years after 2000, that is, $x = 0$ corresponds to 2000, $x = 2$ corresponds to 2002, $x = 4$ corresponds to 2004, and so on. Predict the number of gun deaths in 2004 and 2009. In what year will the number of gun deaths be 7606?

The predicted gun deaths in 2004 will be .

The predicted gun deaths in 2009 will be .

The predicted number of gun deaths will be 7606 in the year .

Enter any number or expression in each of the edit fields, then click Next or Previous Question.

Find the slope, if it exists, of the line containing the pair of points.

(7,9) and (8, -1)

The slope $m = \square$.

(Simplify your answer. Type an integer or a fraction. Type N if the slope is undefined.)

UNDO

Calculator interface showing various mathematical symbols and functions:

- Fraction template: $\frac{\square}{\square}$
- Decimal template: $\square.\square$
- Percentage: %
- Reciprocal: $\frac{1}{\square}$
- Square root: $\sqrt{\square}$
- n-th root: $\sqrt[n]{\square}$
- Coordinate pair: (\square, \square)
- More options: More ?

Enter any number or expression in the edit field, then click Next Question or Previous Question.

Previous Question

Next Question

Test Info

Time Limit No Time Limit

0 of 56 questions complete

This question is worth 1 point

Submit Test