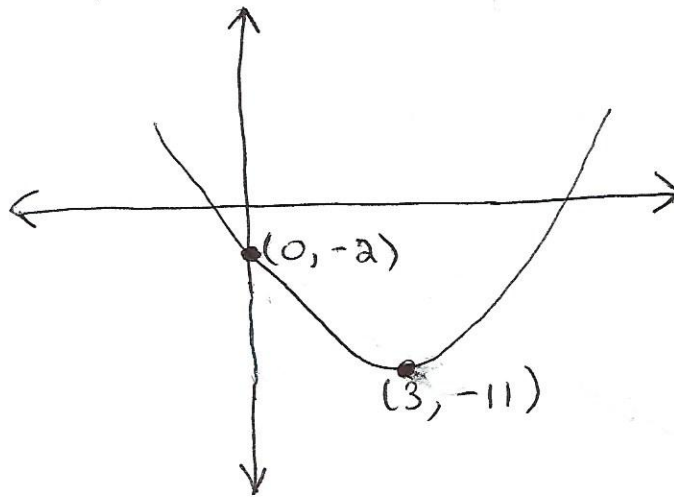


① Determine the quadratic function  $F$  whose graph is given

The vertex is  $(3, -11)$  and the  $y$ -intercept is  $-2$

$F(x) =$  Please simplify the answer



② A man has available 2800 yards of fencing and wishes to enclose a rectangular area.

④ Express the area  $A$  of the rectangle as a function of  $W$  of the rectangle.  $A(W) =$

③ For what value of  $W$  is the area largest  
 $W =$  \_\_\_\_\_ yards. Simplify your answer

⑤ What is the maximum area?

$A =$  \_\_\_\_\_ square yards. Simplify your answer

