

help?

Chap 10

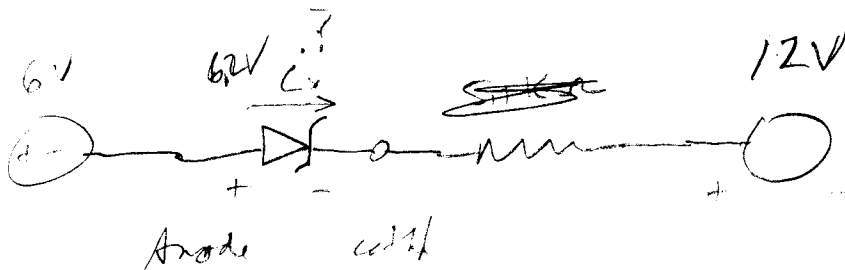
pp. 426

#24

On-Line Testing

A 5.1 K resistor is connected between the cathode of a 6.2 V zener diode and a 12 V power supply. The anode of the diode is connected to 6 V. Approximately how much current will flow through the diode?

- a. 4.8 mA
- b. 0.8 mA
- c. 0.7 V
- d. 0 mA



$I_0 =$

$$V_T = \frac{(1.38 \times 10^{-23})(5.1)}{1.6 \times 10^{-19}}$$

$$\approx .00044$$