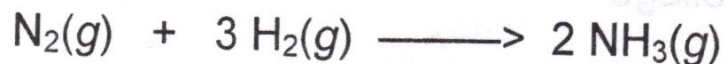


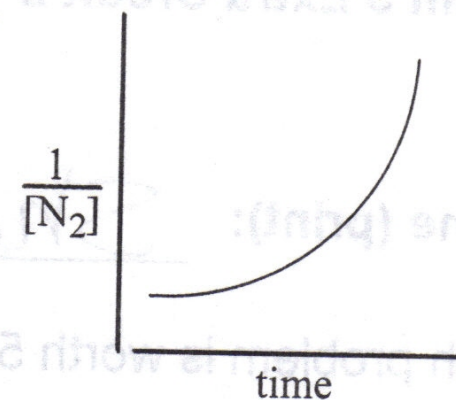
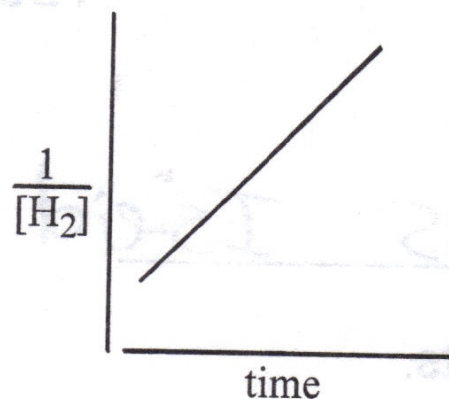
EC2. The rate law for the reaction



is $\text{Rate} = k [\text{N}_2] [\text{H}_2]^2$. A student obtained the experimental data (shown right) for this reaction.

How do the results from each student graph support or disprove the proposed mechanism?

Circle your choice for each graph and explain.



Graph A: definitely supports

may support

disproves

Graph B: definitely supports

may support

disproves

Explanations:

Graph A:

Graph B: